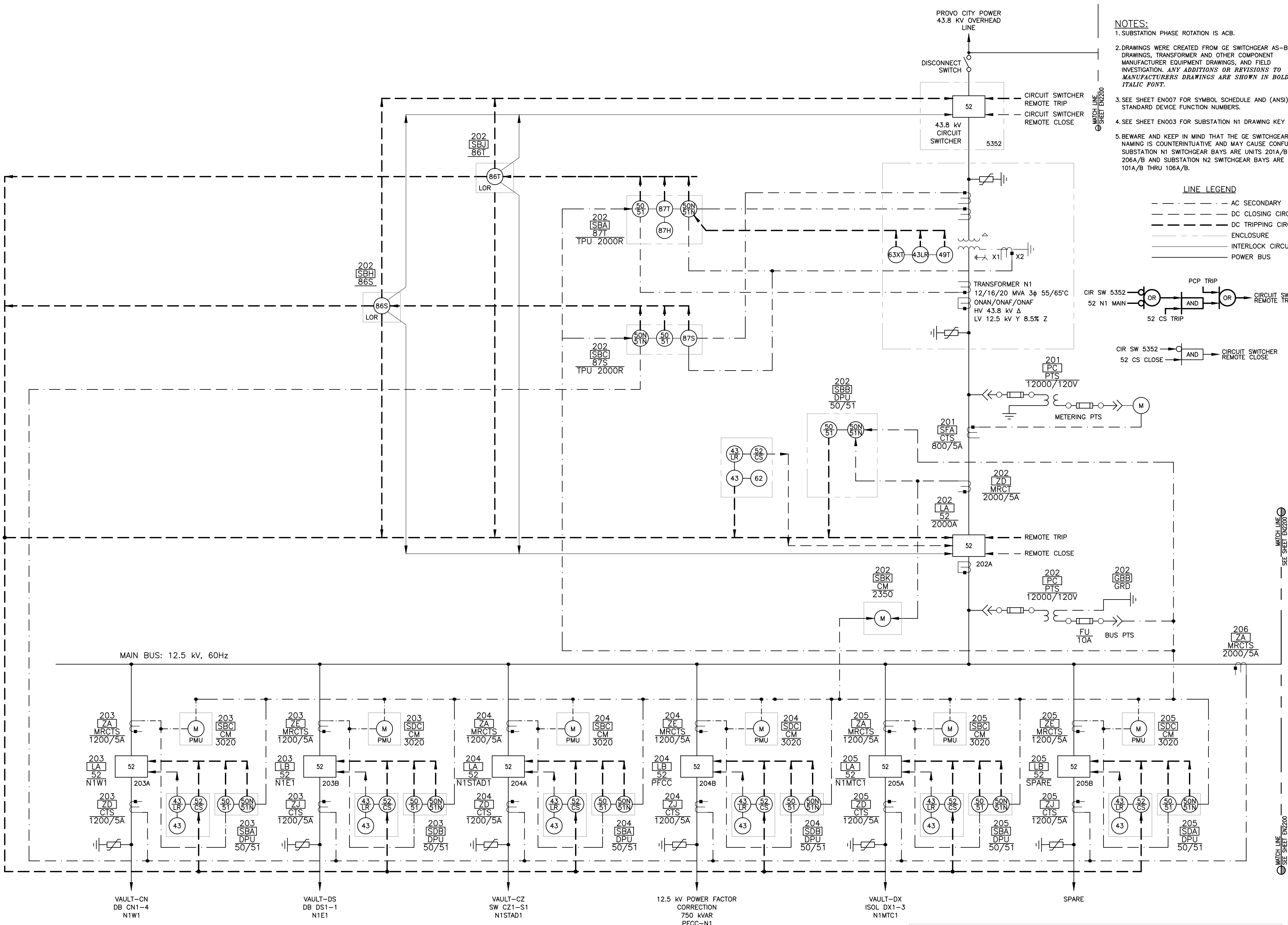
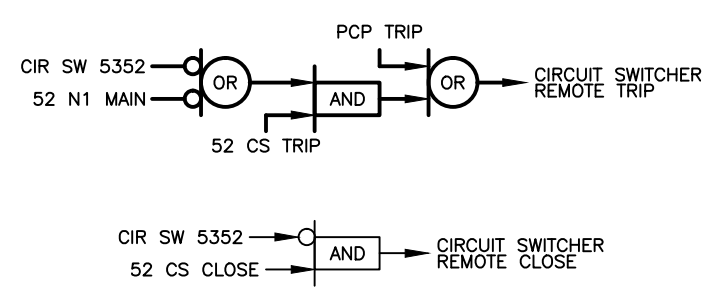
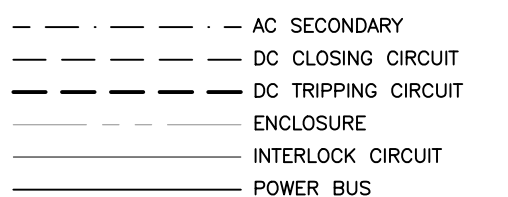


- NOTES:**
- SUBSTATION PHASE ROTATION IS ACB.
 - DRAWINGS WERE CREATED FROM GE SWITCHGEAR AS-BUILT DRAWINGS, TRANSFORMER AND OTHER COMPONENT MANUFACTURER EQUIPMENT DRAWINGS, AND FIELD INVESTIGATION. ANY ADDITIONS OR REVISIONS TO MANUFACTURERS DRAWINGS ARE SHOWN IN *ITALIC FONT*.
 - SEE SHEET EN007 FOR SYMBOL SCHEDULE AND (ANSI) IEEE STANDARD DEVICE FUNCTION NUMBERS.
 - SEE SHEET EN003 FOR SUBSTATION N1 DRAWING KEY PLAN.
 - BEWARE AND KEEP IN MIND THAT THE GE SWITCHGEAR NAMING IS COUNTERINTUITIVE AND MAY CAUSE CONFUSION. SUBSTATION N1 SWITCHGEAR BAYS ARE UNITS 201A/B THRU 206A/B AND SUBSTATION N2 SWITCHGEAR BAYS ARE 101A/B THRU 106A/B.

LINE LEGEND



SUBSTATION N1

MATCH LINE EN2200 SEE SHEET EN2200

MATCH LINE EN2200 SEE SHEET EN2200